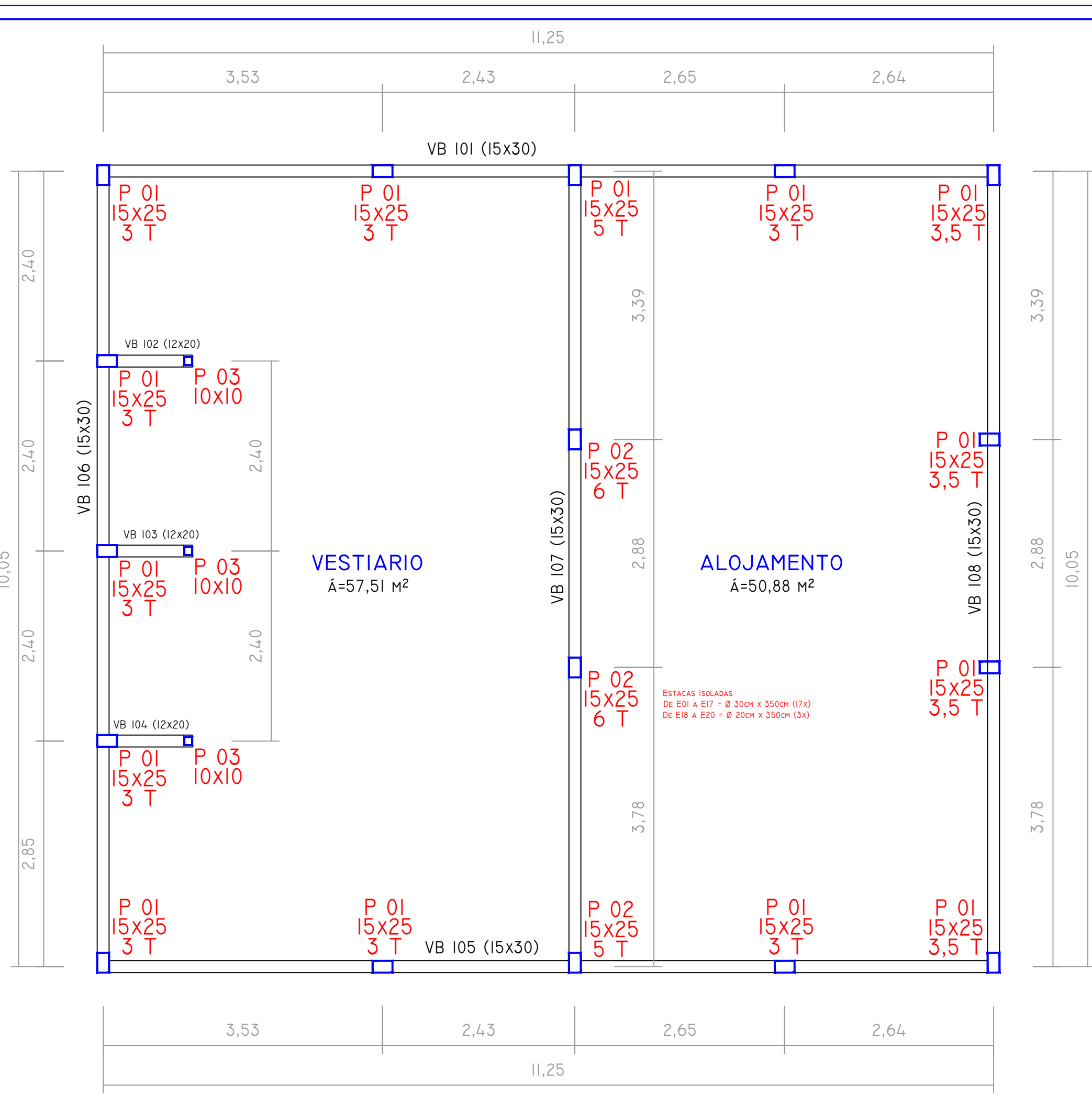


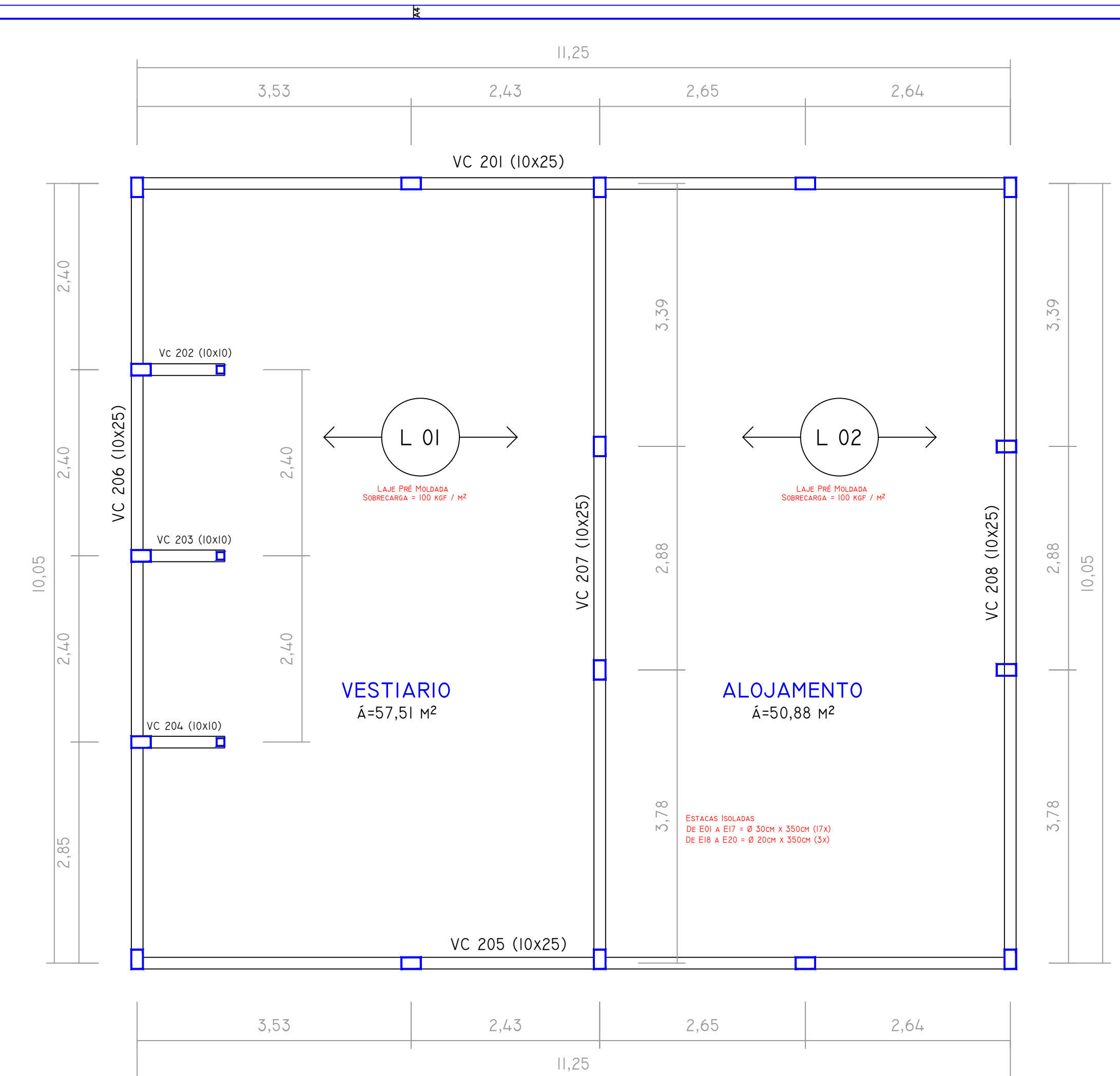
## Estacas e Blocos

Escala 1:50



## Pilares e Vigas Baldrame

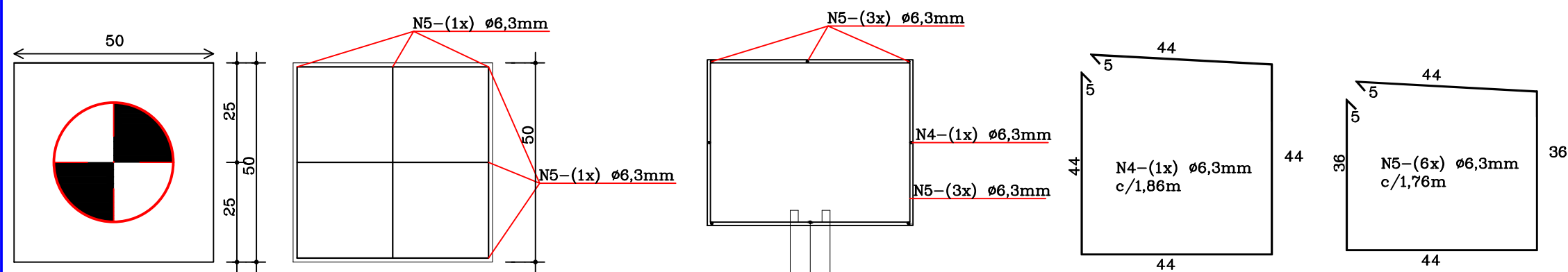
Escala 1:50



## Pilares e Vigas Cinta

Escala 1:50

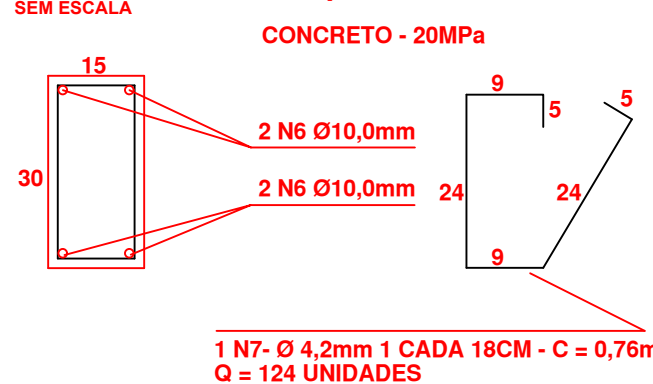
BLOCO (50/50/40) B2 - 17 Unidades



## VIGAS BALDRAME

VB 101 e 105 (15 x 30 x 1125 cm)

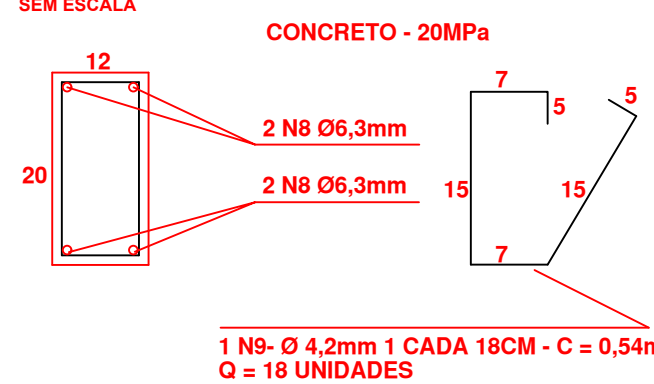
SEM ESCALA



## VIGAS BALDRAME

VB 102,103 e 104 (12 x 20 x 113 cm)

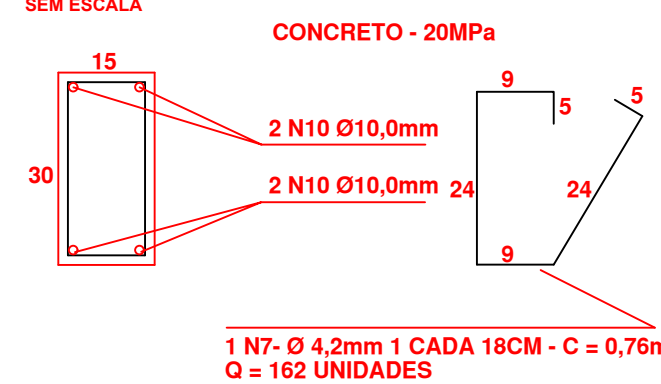
SEM ESCALA



## VIGAS BALDRAME

VB 106,107 e 108 (15 x 30 x 1005 cm)

SEM ESCALA



<b>PROJETO ESTRUTURAL</b>		FOLHA
OBRA: Vestiário e Alojamento com 116,28m²		01/02
END: Rua Manoel Barbosa - Centro - Ventania - PR		ESCALA: INDICADA
PROPRIETÁRIO: PREFEITURA MUNICIPAL DE VENTANIA PR		DATA: JULHO / 2019
		DESENHO: JEFFERSON PHILLIPI
RESP. TÉCNICO: Eng. CIVIL JEDRO JOSÉ STIMAMIGLIO CREA PR-14315/D		ANTÔNIO HELLY SANTIAGO PREFEITO MUNICIPAL